

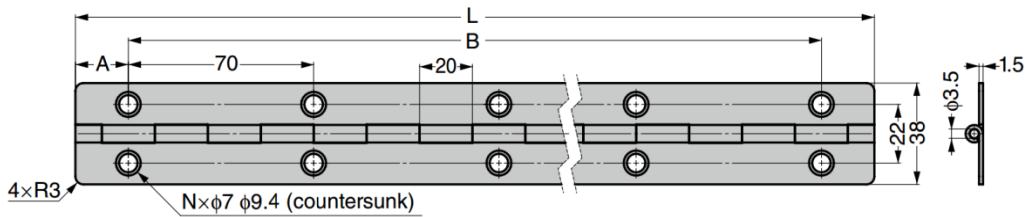
## GLSN-C Stainless Steel Piano Hinge

### Features

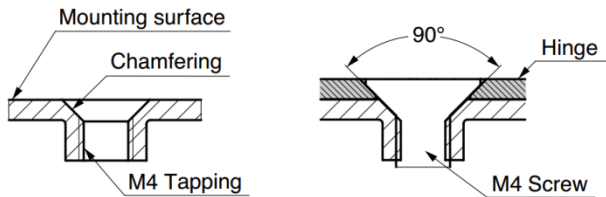
- Piano hinge constructed of stainless steel 304 material
- This is the recommended model for use with lift-assist dampers

### Notes

- Designed for use on wood. Hole positioning on wood should be done by aligning the actual hinge. This product is not suitable for sheet metal or installations with hole pitch limitations.
- When installing to sheet metal, be sure to perform thread relief processing (chamfering) on the mounting surface side. This way, the screw head will not protrude when the hinge is fixed.

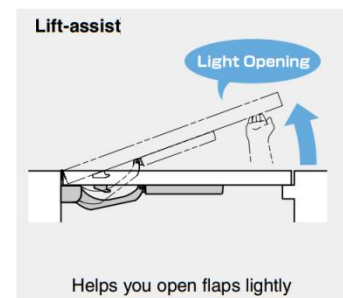
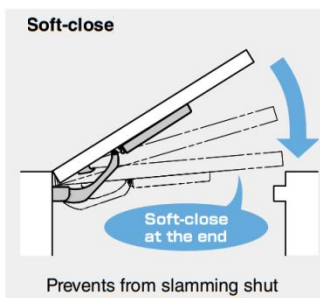


### Processing and Installation



Part No.	Material	Finish	L	A	B	No. of Holes (N)	Load Capacity (per piece)	
GLSN15-38-450C	Stainless Steel 304	Polished	450	15	420	14	392 N	40 kg
GLSN15-38-600C			600	20	560	18	519 N	53 kg

## Lift Assist Dampers



- Ideal damper system for counter flaps
- Slowly close flaps near closing radius
- Soft-close mechanism works even if the flap is only opened slightly
- Lightly open flaps with the lift-assist mechanism
- Can be attached to already installed counters without extra processing
- Come with an installation template for easy alignment

Contact Gripwell for support

### Easy Installation

- Can be attached to already installed counters without extra processing.
- Come with an installation template for easy alignment.